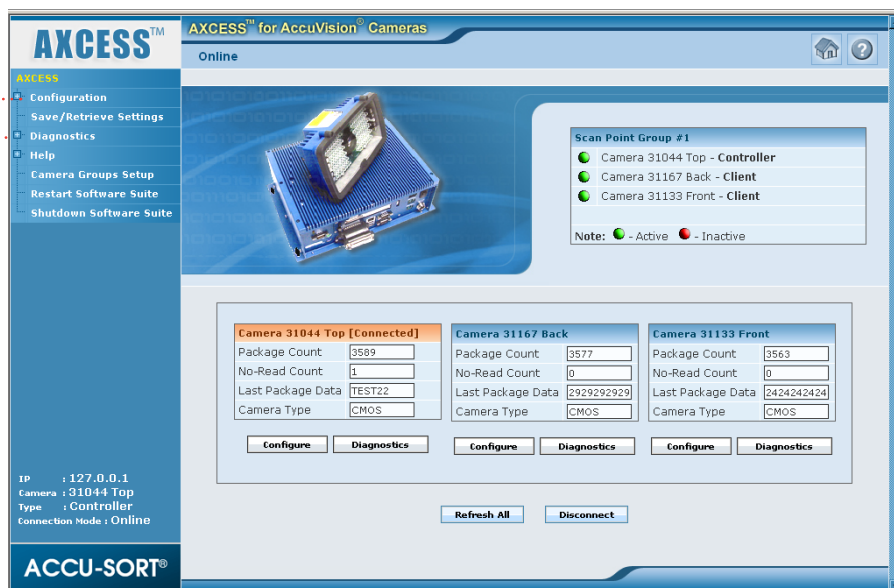
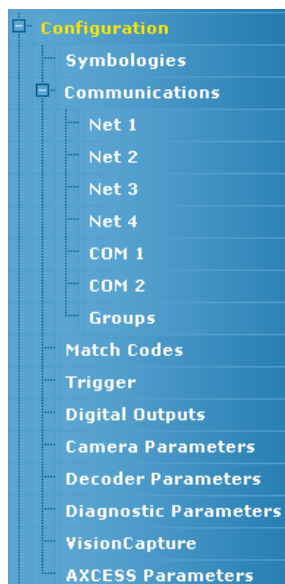


ACCUSORT®

AXCESS™ for AccuVision® User Interface for Mid-Range Cameras



Provides quick and easy configuration for AccuVision MiniCam / HandsFree mid-range camera systems

Developed with an intuitive user interface that accommodates first-time as well as advanced users

Efficiently saves configuration parameters to both the camera and decoder

Monitors all levels of camera system performance in real-time

Operates remotely using a network connection or locally via keyboard/monitor connected to the decoder

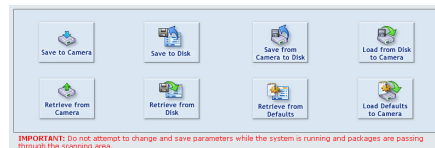
Overview

AXCESS™ for AccuVision® Mid-Range Cameras provides a familiar browser-based user interface that enables intuitive and fast configuration and modification of the MiniCam™ / HandsFree™ CCD camera systems.

Get Started Quickly with Intuitive Setup Features

Use AXCESS to configure AccuVision cameras without the need for onsite service. Simply connect to your camera system remotely via a networked computer or locally using a keyboard/monitor connected to the decoder.

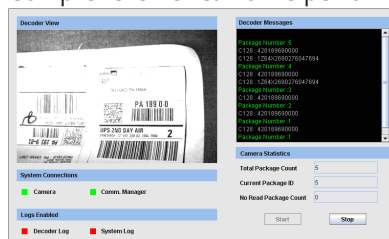
Specify valid 1D and 2D symbologies. Define your communications, message format, framing and filtering. When complete, save your settings to the camera and you're ready to go.



Comprehensive Diagnostics Assure Peak Performance

Comprehensive real-time performance indicators and vital statistics are

provided through several screens including diagnostics setup, tools, and logs. Compare parameters, view images and package history using the diagnostics tools. Useful message logs provide data on the decoder, camera, host, and AXCESS.



This feature rich, user friendly combination of quick setup and at-a-glance diagnostics makes the AXCESS user interface the perfect complement for your AccuVision camera solution.

Image Captions: (TOP LEFT) The AXCESS menu tree provides easy access to configuration and diagnostics screens. (TOP RIGHT) The AXCESS online screen shows the status of all connected cameras. (MIDDLE RIGHT) AXCESS Save/Retrieve Settings buttons allow for quick uploads and downloads of camera settings. (BOTTOM RIGHT) Real-time diagnostics view of image, system status, decoder messages and statistical counts.

AXCESS™ for AccuVision® User Interface

Active Window

Displays the next task as defined by AXCESS Wizard or any task selected from AXCESS Explorer. (Network Settings in this example.)

After completing the configuration of an active window, save the changes and proceed with the next step via either AXCESS Wizard or Explorer.

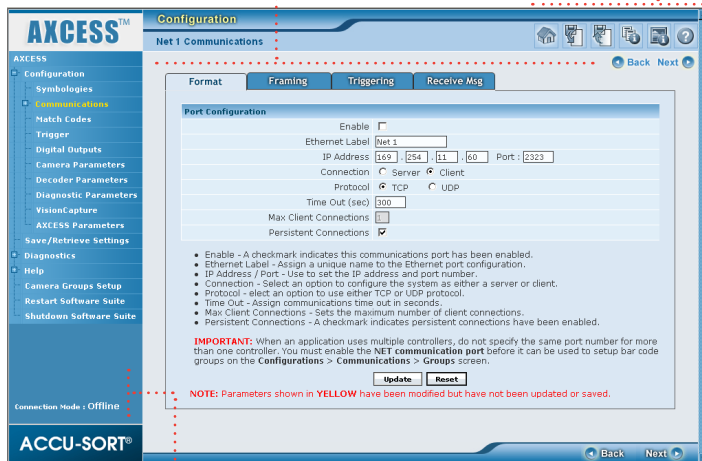
Toolbar

These buttons provide instant access to the save, retrieve, backup and restore functions.

AXCESS Explorer

The navigation list allows users to quickly find the parameters they need to configure or modify.

Use the diagnostics features during normal operations to confirm the camera system is functioning properly.



Connection Mode

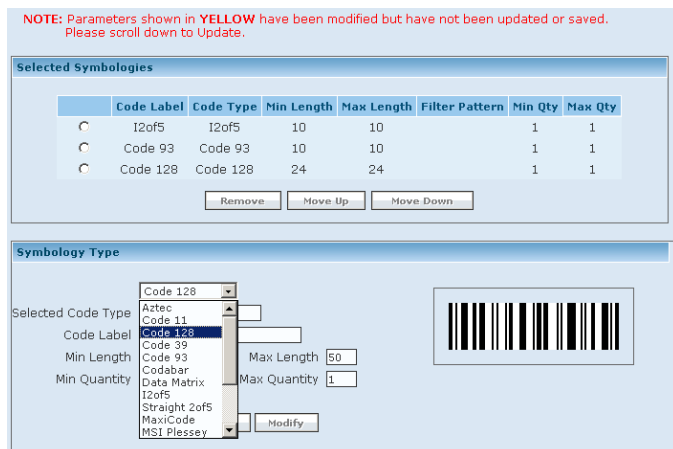
Consistently identifies the camera, IP address and connection mode (online or offline) during setup and diagnostics.

AXCESS Wizard

First-time users will find the wizard easy to use as it steps through the configuration process from start to finish.

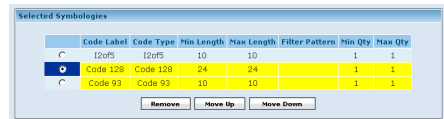
Add, Remove or Edit Bar Codes in seconds!

Use Bar Code Setup to include new bar codes to your list. Or edit existing symbology parameters. A Code Settings window make it a snap!

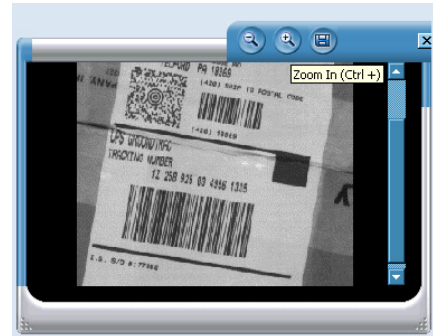


Specifications

User Interface	AXCESS™ for AccuVision® Mid-Range Cameras
Operating System	Windows® XP Embedded (resident on MRC Decoder)
Recommended Browsers	Internet Explorer 6.0 (or greater)
Bar Code Parameters	Symbologies, groups, match codes, padding, stripping, mod checks
Communications Parameters	Controller, Host, Message format, framing and filtering
Other Parameters	Trigger, Transmit, Camera, Decoder, Advanced
Diagnostics	Tools – Compare Parameters, Image Viewer, Package History Logs – Setup, Decoder, Host, Camera, AXCESS
CD Content	User's Manual and Quick Start Guide PDFs



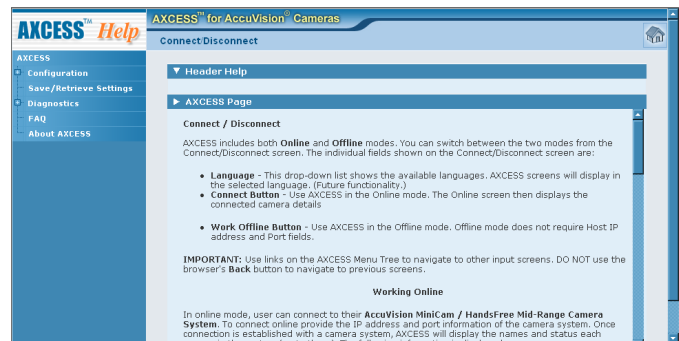
AXCESS helps you keep track of what's done: Every step of the way, you know which parameters you've changed because they are highlighted in yellow until you UPDATE and SAVE.



Diagnostics and Monitoring: Tools (like Image Viewer shown above) enable you to assure optimum performance of your camera system.

Getting Help is Easy!

AXCESS provides complete online help. Simply access help at any time by: 1) pressing the question mark button or 2) using the Help selection.



For more information about auto-ID and material handling solutions from Accu-Sort Systems, contact us at:

ACCUSORT® SYSTEMS, INC.
511 School House Road
Telford, PA 18969
1-800-BAR-CODE™

info@accusort.com
www.accusort.com

© 2005, 2008 Accu-Sort Systems, Inc. All rights reserved. ACCU-SORT, 1-800-BAR-CODE, AXCESS, AccuVision and the AS logotype are trademarks or registered trademarks of Accu-Sort Systems, Inc.